

NEPTUNE SPACE *G.divers* FULL FACE MASK  
OWNER'S MANUAL



*G.divers*

**OCEANREEF<sup>®</sup>**  
connecting divers

For nearly 60 years, OCEAN REEF has been involved in the underwater diving industry. We have contributed much to this industry, from fins and snorkels to the most modern systems of underwater communication. Through the spirit of intrepid pioneers, brilliant inventors, passionate divers, and dynamic entrepreneurs, OCEAN REEF has been able to turn dreams into reality in the underwater world.



OCEAN REEF USA



OCEAN REEF ITALY

In order to limit our paper consumption, and as a part of our environmental friendly and responsible approach, OCEAN REEF prefers to put user documentation online rather than print them out.

Please refer to the following areas of our web site:

Manuals: <http://www.gdivers.com/manuals.html>

We also provide online video tutorials showing you how to set up your mask and com unit

Video: <http://www.gdivers.com/videos.html>



© OCEAN REEF 2010

# NEPTUNE SPACE *G.divers* OWNER'S MANUAL

## TABLE OF CONTENTS

Premise and warnings	4
Introduction	5
General precautions and warnings	5
What's the correct mask size?	7
Use of conventional regulators	8
1st stage SL 35TX	8
Equalization	9
Quick steps	10
Purging	12
Serial number	12
Maintenance and cleaning	13
Storage	13
Communication	14
Troubleshooting	15
Schematic and parts list (Neptune Space <i>G.divers</i> )	16
Schematic and parts list (SL 35TX)	18
Warranty	21

The DPIs (Individual Protective Device) scrutinized in these operating instructions have undergone every possible test for design validation by:

Germanisher Lloyd  
Vorsetzen 35  
20459 Hamburg—Germany  
Notified Body n.: 0098

### Full face Mask Neptune Space and SL35TX

Comply with CE Certification in accordance with 89/689/EEC directives under the UNI EN250:2000 standard rules for underwater activities, including cold water use.

### PREMISE

The DPIs in question are a separate part of the self-contained underwater breathing apparatus, commonly known as SCUBA.

They comply with European regulation EN-250:2000. They can be stored at a temperature of between 32° and 140° F. It is necessary that this equipment only be used by fully trained, certified divers.

**Operating restrictions:** The DPIs in question cannot be used with diving products without the CE mark and the air supply must meet the requirements of EN 12021. Incorrect use, non-original spare parts and insufficient or poor maintenance, besides being dangerous to the health and life of the user, releases **MESTEL Safety** of any responsibility and nullifies the warranty.

The series of DPIs described in the following manual are the following:

**NEPTUNE SPACE *G.divers* with 1st stage SL 35TX: full face mask with integrated 2<sup>nd</sup> stage regulator and SL 35 TX 1st stage.**

### WARNINGS, CAUTIONS, NOTES

Pay special attention to information provided in warnings, cautions and notes that are accompanied by these symbols:



A **WARNING** indicates a procedure or situation that, if not avoided, could result in serious injury or death to the user.



A **CAUTION** indicates any situation or technique that could cause damage to the product, and could subsequently result in injury to the user.



A **NOTE** is used to emphasize important points, tips, and reminders.

# NEPTUNE SPACE *G.divers*

## INTRODUCTION

The NEPTUNE SPACE *G.divers* mask was developed through experience gained from producing products for military personnel protection. All designs and materials were tested to obtain superior performance and increased safety.

The high quality of the product does not allow the user to ignore the problems connected with the correct use of the product and the rules for safe diving.

## GENERAL PRECAUTIONS AND WARNINGS

Before using this mask, you must have successfully received training and certification in the technique of SCUBA diving from a recognized certification agency (or any U.S. Military or government operated diving school). Use of this equipment by a person who is not certified by a recognized agency shall render all warranties, express or implied, null and void.



Use of SCUBA equipment by uncertified or untrained persons is dangerous and can result in serious injury or death.



This mask is not configured for commercial use with surface supplied air. Always pressurize the Neptune Space *G.divers* gradually by opening the cylinder valve SLOWLY.



**NEVER** lubricate any part of the mask and/or regulator or cylinder valve with any lubricant. Lubrication must only be performed by an OCEAN REEF trained technician.



**DO NOT** apply any type of aerosol spray on the Neptune Space *G.divers*. Doing so may cause permanent damage to certain plastic components, including the second stage housing.



**DO NOT** leave a cylinder standing unsecured with the Neptune Space *G.divers* attached to the valve. Doing so may cause permanent damage to the FFM and cylinder valve if the cylinder falls over against the first stage.



Factory prescribed service for this product must be performed at least once annually by a factory trained OCEAN REEF Service Technician who is employed by an Authorized OCEAN REEF Dealer. Repair, service, disassembly, or first stage adjustment must not be attempted by persons who are not factory trained and authorized by OCEAN REEF.



When diving in cold water (below 45<sup>0</sup> F, or 7<sup>0</sup> C), you must have received training and certification in the techniques of cold water diving from a recognized training agency.



The Neptune SPACE *G.divers* might be used with NITROX gasses up to 40% O<sub>2</sub>. It is always recommended to use cleaned air from specified cleaned air source. SL35TX 1st stage can't be used with NITROX. Always use NITROX compatible 1st stages when NITROX is required.  
Note: not valid in the European Union.



European Union NITROX standards indicate that regulators using gases over 22% must be purchased together with first stages. They must have special markings indicating that they are O<sub>2</sub> clean.

Before connecting the regulator to the tank, check the following:



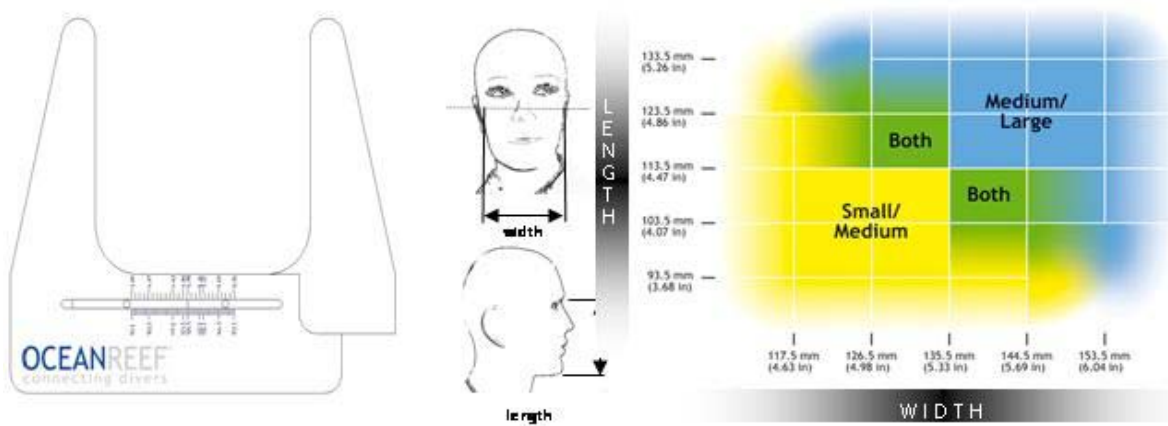
- Check that the O-ring on the tank is in place on the valve and is in perfect working condition (INT WITH Yoke nipple CGA 850 version only). If it is damaged or missing, it should be replaced.
- Verify that the instrumentation and accessories have been installed correctly.

## WHAT'S THE CORRECT MASK SIZE?

The Neptune Space *G.divers* is available in two sizes, Small/Medium and Medium/Large.



In order to determine whether a diver should wear a S/M or M/L mask, OCEAN REEF has designed a Mask Measuring Kit. The sizing and measuring system were designed in accordance with the official measuring procedure used in the Los Alamos Scientific Laboratory Charts at the SBCCOM Mask Fit Facility-Aberdeen Proving Ground (Maryland, USA).



Before purchasing a mask, the customer may use the calliper to take two simple face measurements. Using the Full Face Mask Size Recommendation Chart, he or she can evaluate the size category into which the measurements fall. There are three different size categories on the chart: Small/Medium, Both, & Medium/Large. If the measurements fall within the both category, then the diver should technically be able to wear either full face mask (M/L or S/M), and in that case should try on a mask to select the best fit. Please note that the chart boundaries fade. The fading areas represent less common face measurements. It is very likely that a mask will still fit comfortably even if measurements are located in these fading areas.

## USE OF CONVENTIONAL REGULATORS

A special adaptor allows the connection of several kinds of regulators. The adaptor is available in two sizes, medium (standard) and small. This adaptor fits in place of the surface air valve (code 33020: S, code 33021: M).

## USE OF OVER-INJECTED REGULATORS

Over injected regulators have a diaphragm with an inhalation cracking pressure below zero. These regulators "free flow" easily, and as a result, should not be used with the Neptune Space *G.divers* or other Neptune masks.

Changes in regulator performance can also be caused by the different positions assumed during a dive; the use of a regulator with flow adjustment is recommended.



When descending the adjustment knob must always be turned on to get the proper air flow. Do not turn off the adjustment knob while descending.

## 1ST STAGE SL 35 TX



The Neptune Space *G.divers* may be used only with this high performance, balanced diaphragm 1st stage with anti-freeze kit. The first stage has adjustable medium pressure and is made of brass with a satin finish body, stainless steel piston, Teflon seat, and stainless steel spring.

It is available with the following characteristics:

- Standard connection 200 bar (code 9922)
- DIN connection 300 bar (code 9923)
- 2 high pressure ports 7/16 -20 UNF
- 4 Medium pressure ports 3/8-24 UNF
- Flow rate of approx. 4800 l/m at 140 bars



## EQUALIZATION



The Neptune Space *G. divers* is equipped with a simple patented internal device to close the nostrils and allow underwater equalization. By loosening the screw it is possible to move the plate up and down to find the most comfortable position to equalize. The silicone caps may easily be turned. By turning the caps you may adjust them to fit a larger or thinner nose (distance between the nostrils). Two additional plastic inserts are supplied. By removing the silicone cap it is possible to install the insert in the plate (cap post) increasing the distance of the cap from the plate and allowing it to fit closer to the nostril. This is sometimes necessary for flatter noses or when a hood is used under the mask.

To close the nostrils for equalization, simply press the top part of the mask (or push on the regulator front cover especially if using the visor light). The two equalization silicone caps will move upward and close the nostrils.

The silicone caps when correctly positioned should allow breathing through the nose and close the nostrils only when pressing the top part of the mask to equalize



Equalization extensions with their storage support.

## QUICK STEPS

### BEFORE DIVING

1. Adjust the equalization system to fit perfectly your need and test it on your face until you feel completely comfortable.



2. Don the mask (make sure surface air valve or octopus port is open to allow air in if installed).
3. Completely pull down the central part of the strap and adjust the 6 straps, middle ones first, than bottom ones and finally the top ones.



4. With the LP hose plugged in press the purge button of the 2nd stage and check that the air flows freely. Release the button and check that air stops flowing.



5. Close surface air valve before descending (if installed).



#### DURING A DIVE

1. Breathe normally through your nose or mouth, whichever is most comfortable.



- 2.
3. To equalize, press the front part of the regulator or the top of the mask (without pushing the purge button).

[For more information watch the tutorial videos on www.gdivers.com](http://www.gdivers.com)

### AFTER DIVING



1. Carefully rinse the regulator with fresh, gently flowing water. **Do not press the purge button.**
2. Make sure the dust cover is firmly in place to keep water out of the first stage.
3. Attach the regulator to the tank after rinsing and press the purge button for 10-15 seconds to purge any water or debris from regulator.
4. When storing equipment, do not tightly loop the hoses and avoid pulling on them when the regulator is attached to the tank. Do not bump the Neptune Space G.divers. If you do, check for any damage.
5. When storing the mask, turn the adjustment knob counterclockwise.



*OCEAN REEF highly recommends that you practice in a pool before using your mask in open water.*

### PURGING

The mask can easily be purged in the event that water enters the mask by pressing the exhaust button on the second stage. The water will flow out of the lower valve. The diver should be facing straight ahead, with the exhaust valve being the **LOWEST** part of the system.

### SERIAL NUMBER

The regulator housing is marked with a serial number that identifies the product for warranty purposes.



## MAINTENANCE AND CLEANING

TYPE OF ACTION	BEFORE A DIVE	AFTER A DIVE	EVERY YEAR	EVERY 2 YEARS
RINSE		X		
GENERAL FUNCTION CHECK	X			
REGULATOR SERVICING			X	
MASK SERVICING				X

For optimum longevity of the mask and the proper functioning of its parts we recommend rinsing the mask thoroughly in fresh water after every use. DO NOT clean the visor with any abrasive materials. We recommend drying the visor, especially the inside parts, with a soft, clean cloth.

## STORAGE

The mask must be stored in a dry place with no direct sunlight and far from sources of heat. Do not store it at temperatures below -4°F (-20°C) or above +122°F (+50°C). We suggest you use the AC-4 visor protector and the carrying bag included in the package when storing the mask to avoid accidental abrasion (see section 2.4.3).

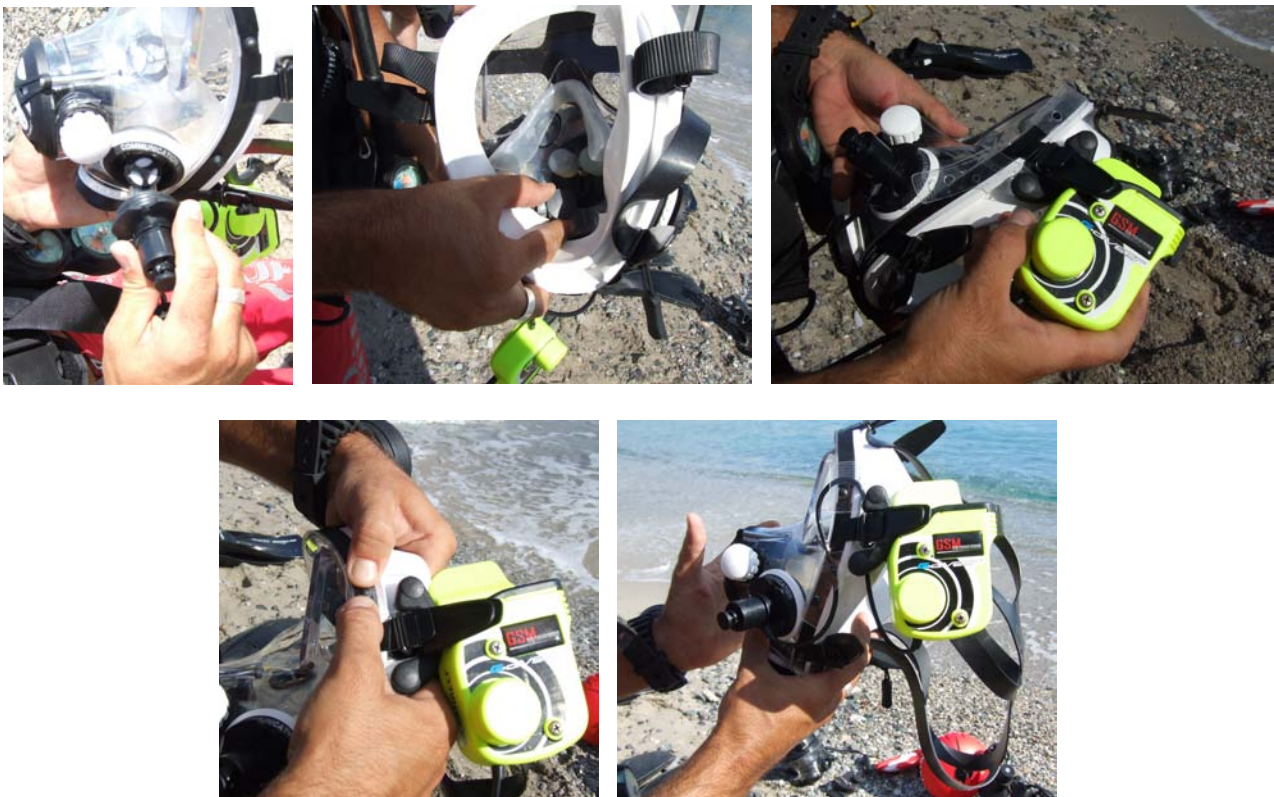


## COMMUNICATION

### COMMUNICATION APPARATUS

The Neptune Space *G.divers* may be used with various communication systems between divers and/or the surface. It is compatible with most underwater communication systems if supplied with the proper adapter and/or DIN connection. Information may be obtained from your OCEAN REEF dealer.

### INSTALLING THE UNDERWATER COMMUNICATION SYSTEM



The microphone support (PTT) is screwed into the connection located on the left side of the mask and identified with the words COMMUNICATION SYSTEM. The GSM *G.divers* is installed on the left side of the head harness attaching the Neptune Assembly Connection System (NACS) on the 2 visor supports as per NACS/GSM *G.divers* instructions.

**For more information watch the tutorial videos on [www.gdivers.com](http://www.gdivers.com)**


### USE OF THE UNDERWATER COMMUNICATION SYSTEM

For correct use of the underwater communication system read the specific manual.

## TROUBLESHOOTING

### VISOR FOGS

#### **Warning: Fogging is a Signal That Mask Is Not Positioned Correctly On Face!**

- 
- a) orinasal mask positioned incorrectly or pinched.
  - b) orinasal mask improperly seated—check that it is properly tucked around communication port and exhaust valve.
  - c) Top harness straps pulled too tightly—loosen.
  - d) Bottom harness straps not pulled tight enough.

### AIR LEAKS

- a) Hair/hood trapped inside mask skirt.
- b) Sewing on hood—skirt will not necessarily seal on all hoods, especially if sewing on hood is where mask skirt fits.
- c) Straps pulled too tightly or improperly.

### REGULATOR FREE-FLOWS

- a) Adjustment knob opened too much—regulate by closing knob in face-down position.
- b) Purge button has sand/pebbles stuck inside.
- c) Regulator needs servicing \*.
- d) 1st stage intermediate pressure not 140±3 psi / 9.5→9.8 bar.

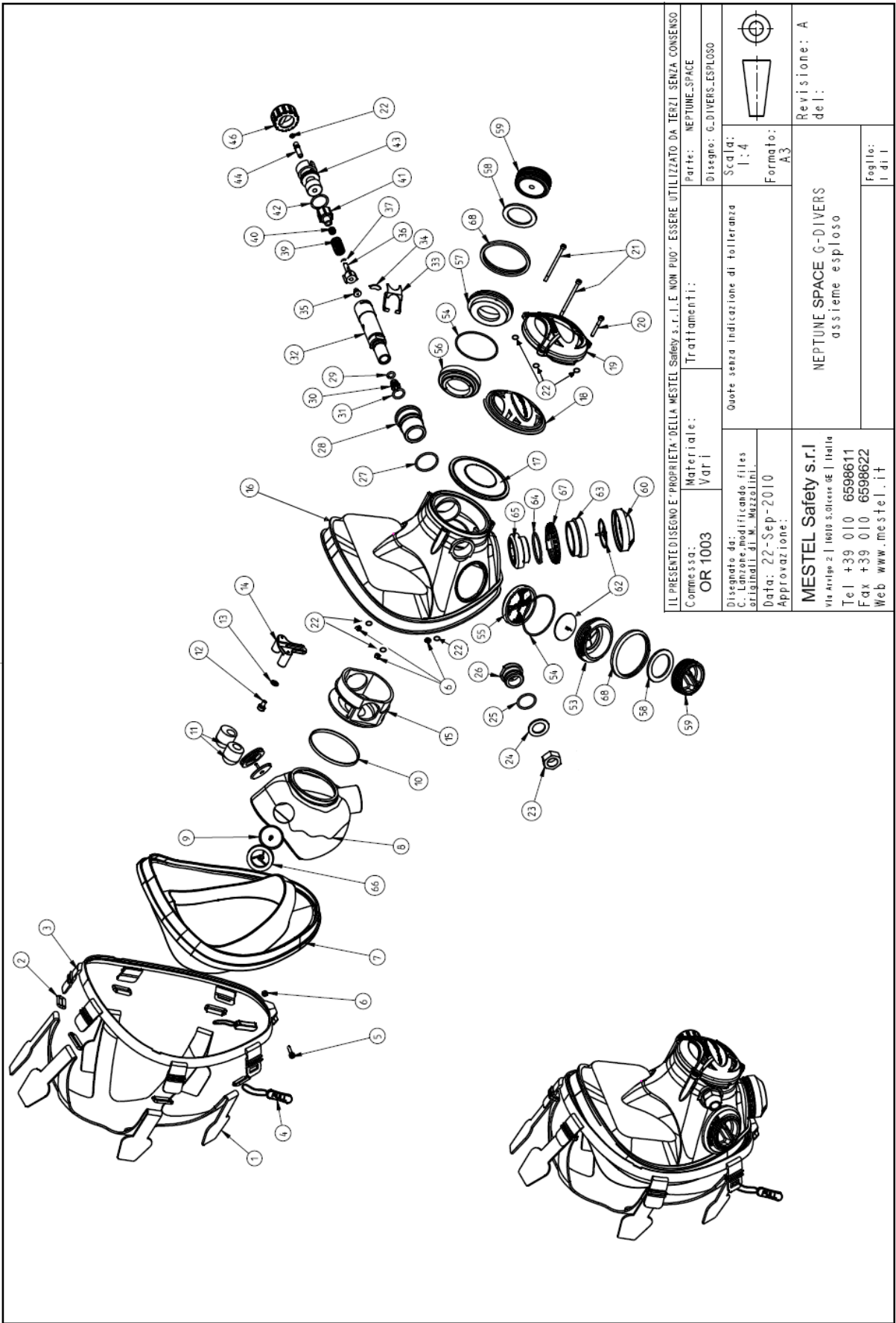
### REGULATOR HARD TO BREATHE THROUGH

- a) Adjustment knob closed too much—regulate by opening knob in face-down position.
- b) Regulator needs servicing \*.
- c) 1st stage intermediate pressure not 140±3 psi / 9.5→9.8 bar.

### FFM VIBRATES

- a) Harness straps not adjusted properly—tighten bottom straps.
- b) Adjustment knob opened too much.
- c) Neptune Space adjustment too soft—make proper adjustment with adjustment tool \*.
- d) 1st stage intermediate pressure not 140±3 psi / 9.5→9.8 bar.

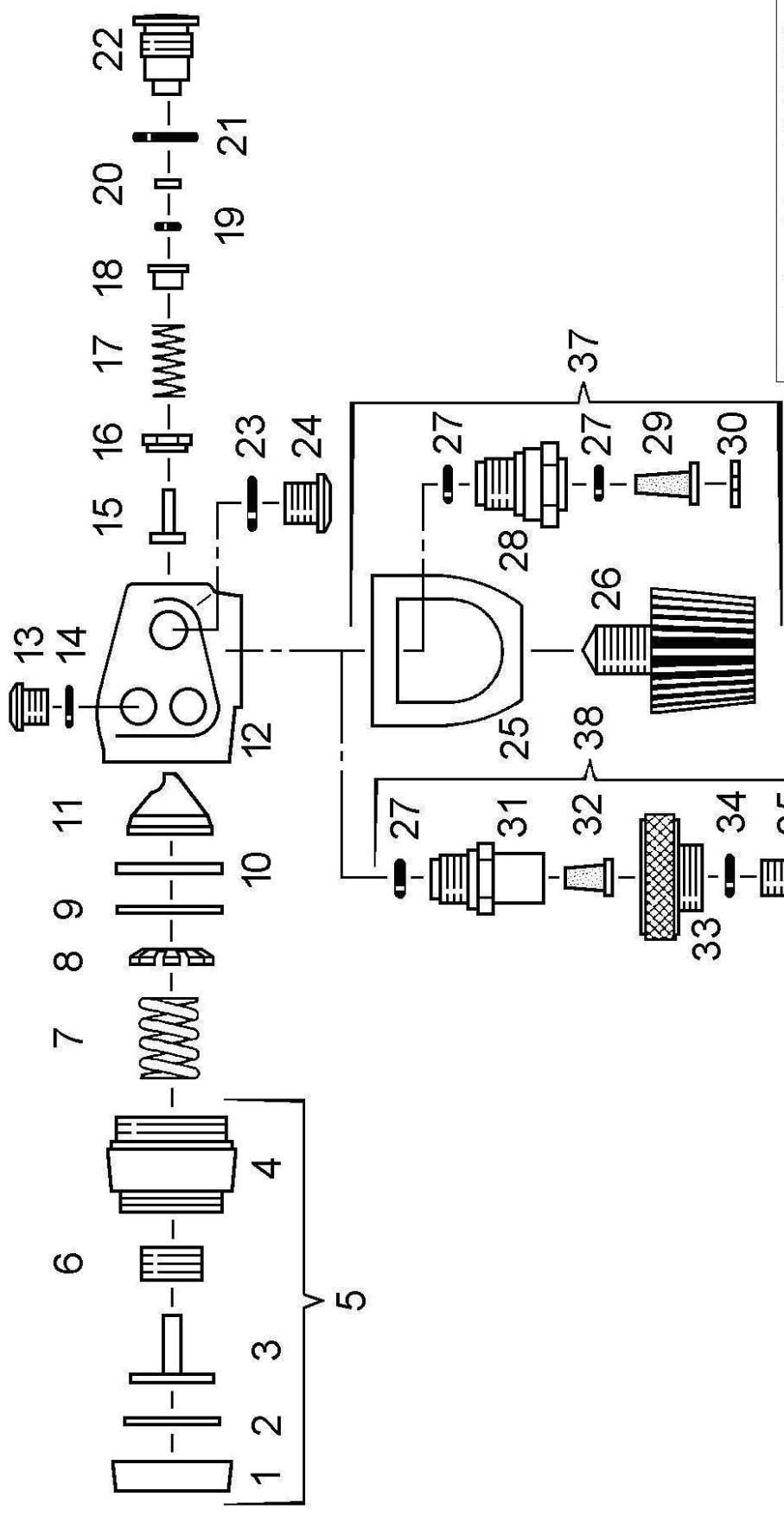
**\* OCEAN REEF recommends that the regulator be serviced at least once a year, or after 100 dives. This should only be performed by an OCEAN REEF dealer or an authorized OCEAN REEF repair station which uses original spare parts. This also applies to any periodic serving and/or repairs required.**



IL PRESENTE DISEGNO E' PROPRIETA' DELLA MESTEL Safety s.r.l. E NON PUO' ESSERE UTILIZZATO DA TERZI SENZA CONSENSO	
Commissa:	OR 1003
Materiale:	Vat I
Trattamenti:	
Parte:	NEPTUNE_SPACE
Disegno:	G.DIVERS.ESPLOSO
Scala:	1:4
Formato:	A3
Disegnato da:	C. Lanzoni, modificando files originali di M. Mazzolini.
Data:	22-Sep-2010
Approvazione:	
MESTEL Safety s.r.l. Via Aringo 2   10018 S.Olcese d'A   Italia Tel +39 010 6598611 Fax +39 010 6598622 Web www.mestel.it	
NEPTUNE SPACE G-DIVERS assieme esploso	
Revisione: A del:	
Foglio: 1 di 1	



7015	1	Visor - Space	16		8448	1	Regulator housing - Space w/SN	15
6529	4	NG-24 M3 nut	6					
1352	1	FACE SEAL COBALT M/L	7		9420	1	O-RING 114	31
1359	1	FACE SEAL EMERALD M/L	7		9672	1	NOZZLE	30
new	1	FACE SEAL white M/L	7		9673	1	O-RING 2025	29
new	1	FACE SEAL Pink M/L	7		15257	1	BODY WASHER	24
1360	1	FACE SEAL EMERALD S/M	7		15433	1	HEX NUT	23
1353	1	FACE SEAL COBALT S/M	7		15446	1	O-RING 2068	27
new	1	FACE SEAL white S/M	7		15447	1	WEDGE	34
new	1	FACE SEAL Pink S/M	7		15448	1	DEMAND LEVER	33
6810	2	Quick release	4		15532	1	IIND STAGE BODY HOUSING	32
9003	1	M-8 STRAP FOR FRB/2 BUCKLE	1		15750	1	TRIM SCREW	44
9002	6	FRB/2 BUCKLE	2		16456	1	Adjustment screw	43
6528	1	NG/23 SCREW M3 X 14	5		15470	1	balanced poppet chamber	41
6801	1	Clamping Band	3		6966	1	Spring L33-D thread 0,9 D int 8,4	39
6781	1	Inhalation Diaphragm w/puck rel 7	17		15439	1	O-ring balanced poppet 2.6 x 1	37
20080	1	Silicone button w/ NS logo emerald	18		9675	1	balanced poppet	36
OR003102	1	Silicone button w/ NS logo white	18		8866	1	Seat balance poppet	35
OR003103	1	Silicone button w/ NS logo pink	18		OR003090	1	dive/prediver x g-divers	28
OR003101	1	Silicone button w/ NS logo cobalt	18		6963	1	o-ring * dive prediver 24 *2	27
OR003092	1	g-divers front cover black w/logo	19		6964	1	insert OR 2075	25
6961	2	Screw long - front cover Space	21		6980	1	spring I 8,5 D thread 0,9 int 5,5	40
6962	1	Screw short - front cover Space	20		6970	1	Insert	26
6965	7	O-ring 2010	22		OR003068	1	Adjustment knob white	46
6924	2	SB-5C ECCENTRIC EQUALIZER BLOCK	11		OR003069	1	Adjustment knob pink	46
6925	1	SB-5A EQUALIZER	14		OR003066	1	Adjustment knob cobalt	46
15253	1	WASHER M4 FOR SCREW M4x8	13		OR003067	1	Adjustment knob emerald	46
15255	1	SCREW M4x8	12		6518	1	NG/15 BUSHING W/HOLES	65
15258	1	INSERT M4 CO5			6710	1	MI/10 O-RING 2131 33 X 1,78	64
6926	2	EQUALIZER EXTENTION SHORT 3mm			8811	2	ER-09 EXHALATION VALVE	62
6927	2	EQUALIZER EXTENTION LONG 6mm			OR003089	1	G-DIVER VALVE HOLDER	63
6928	2	EQUALIZER EXTENTION X-LONG 10mm			6520	1	exhaust valve cover	60
1367	1	N/7 ORINASAL CRYSTAL	8		OR003088	1	OR oval sticker	
1377	2	orinasal valve holder	66		OR003054	1	exhaust/SAV ring cobalt	67
1376	2	orinasal valve	9		OR003055	1	exhaust/SAV ring emerald	67
6718	1	MI/14 ORINASAL BAND	10		OR003056	1	exhaust/SAV ring white	67
6514	1	NG/10 SIDE CONNECTOR BUSHING	55		OR003057	1	exhaust/SAV ring pink	67
OR003049	1	NG-9 SAV/OCTOPUS	53					
1361	2	NG/13 SEAL	58					
6515	2	NG/9B PLUG	59					
6501	2	NG/12 O-RING 46,9 X 1,5	54					
6304	1	NG-9 SIDE CONNECTOR wo/ h	57					
6549	1	M/P2 COM. SYSTEM BUSHING rel 7.1	56					
OR003052	2	side ports silicone ring white	68					
OR003053	2	side ports silicone ring pink	68					
OR003050	2	side ports silicone ring cobalt	68					
OR003051	2	side ports silicone ring emerald	68					



**INT Yoke version**

**DIN 300 bar**

Il presente disegno è di proprietà della MESTEL Safety e non può essere utilizzato da terzi senza consenso.	
Data: 04/07/2006	Descrizione: I stage SL 35 TX INT 230 BAR
Scala: 1:1	Materiale: chromium plated brass Tolleranze: S/N
MESTEL Safety s.r.l. Rel. 4.0 <small>Un'origine è 100% italiana</small> Genova Tel: +39 010 6598611 Fax: +39 010 6598622 WWW.mestel.it	

SL 35 TX (1ST STAGE) 4.0

Key	Code	R-DIN	R-YOKE	Designation
1	9810	1	1	Retaining cap
2	9811	1	1	Diaphragm Ø33 x 1.5
3	9812	1	1	Pressure piston
4	9813	1	1	Intermediate ring
5	9814	1	1	Anti freeze kit
6	9815	1	1	Adjusting screw
7	9816	1	1	Spring
8	9817	1	1	Spring Plate
9	9818	1	1	Friction Ring
10	9819	1	1	Diaphragm Ø36.9 x 2
11	9820	1	1	Piston guide
12	9821	1	1	Regulator body
13	9822	3	3	LP plug, 3/8 UNF
14	9823	4	4	O-ring 7,65 x 1,78
15	9824	1	1	Piston
16	9825	1	1	Guide ring
17	9826	1	1	Spring
18	9827	1	1	Retaining cap
19	9620	1	1	<i>O-ring 2,9 x 1,78(2012)</i>
20	9829	1	1	Back pressure ring 3,2 x1,5
21	9411	1	1	<i>O-ring 14,00 x 1,78(2056)</i>
22	9831	1	1	Balancing chamber
23	9832	2	2	O-ring 8,73 x 1,78
24	9833	2	2	HP plug, 7/16 UNF
25	9834		1	Yoke INT, 9/16-18 UNF
26	9835		1	Yoke screw, 9/16-18 UNF
27	7831	1	2	<i>O-ring 9,25 x 1,78 (2037)</i>
28	9837		1	Yoke fastener
29	9838		1	Filter element YOKE
30	9839		1	Retaining ring
31	9840	1		Hand wheel fastener, 300 bar
32	9841	1		Filter element DIN
33	9842	1		Hand wheel DIN, 300 bar
34	9843	1		O-ring 10,82 x 1,78
35	9844	1		Retaining screw DIN, 300 bar
36	9845	1		O-ring 11,00 x 2,5
37	9846			Conversion kit, YOKE
38	9847			Conversion kit DIN, 300 bar

## Warranty

1. OCEAN REEF masks are guaranteed to be free of material or manufacturing defects for a period of 24 months from the time the unit is purchased. For the duration of the guarantee, the Company's responsibility is limited to replacement of any parts that are defective in our opinion, and that have not been used incorrectly or handled negligently. The mask must be returned to the outlet from which it was bought, along with the warranty card. The cost of transport is to be prepaid by the customer.
2. Even during the guarantee period, this guarantee shall not be valid where:
  - Damage was caused by incorrect handling or carelessness.
  - Damage was caused by the mask falling after it was purchased.
  - Damage caused by fire, earthquake, floods, lightning, or other natural disasters.
  - The warranty card is not produced.
  - Our name, the date of purchase, and the seller's name do not appear on the warranty card.







MESTEL Safety s.r.l  
Via Arvigo 2, 16010 Genova (Italia)  
Phone +39 010 6598 611 Fax +39 010 6598 622  
E-mail: [ocean.reef@oceanreefgroup.com](mailto:ocean.reef@oceanreefgroup.com)

OCEAN REEF, Inc.  
1699 La Costa Meadows Dr. Suite 101 San Marcos, CA 92078  
Phone +1 760 744 9430 Fax +1 760 744 9525  
E-mail: [operator@oceanreefgroup.com](mailto:operator@oceanreefgroup.com)

OCEAN REEF on the Web:  
[www.oceanreefgroup.com](http://www.oceanreefgroup.com)

© OCEAN REEF 2010